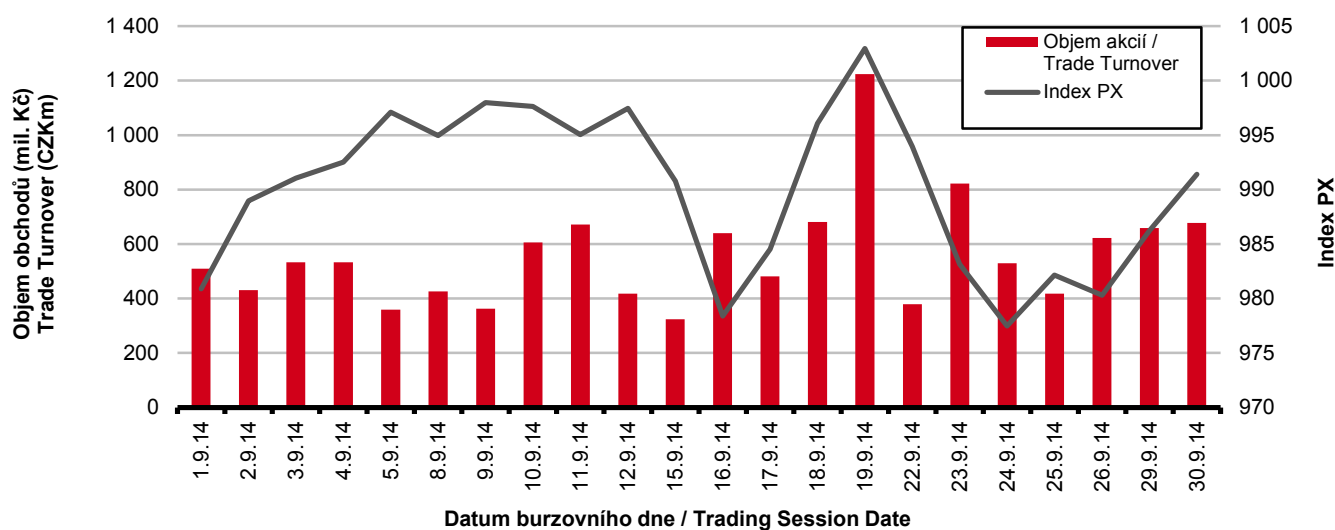


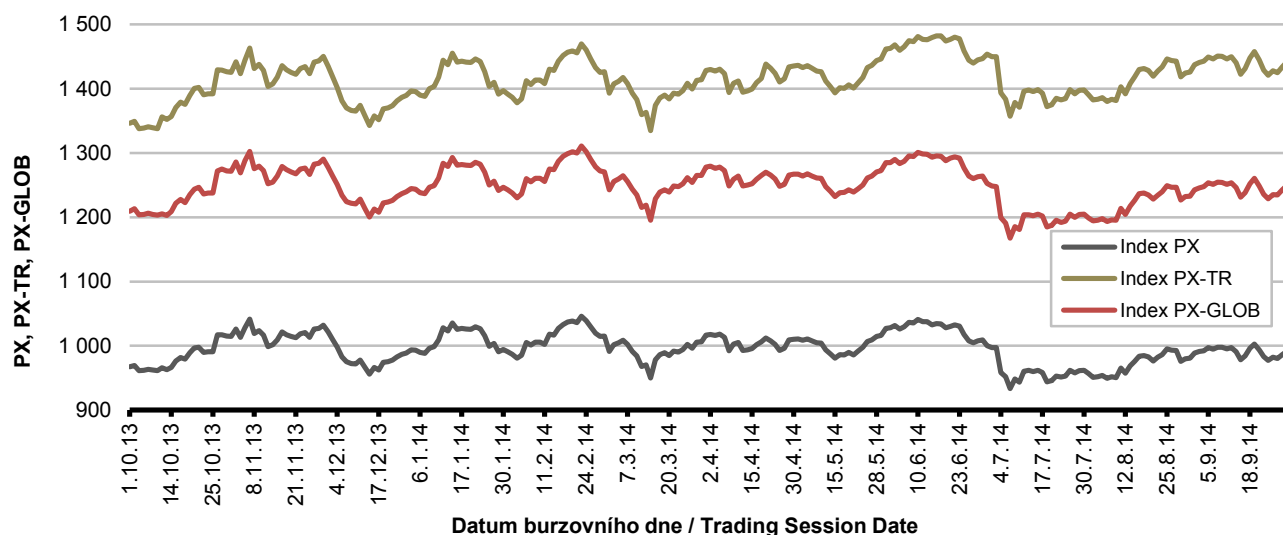
Burzovní indexy v hodnoceném měsíci Exchange Indices in the Month under Review

| Index | Hodnota (konec měsíce) | Měsíční změna (%) | Roční změna (%) | Měsíční max. | Datum max. | Měsíční min. | Datum min. |
|---------|------------------------------|--------------------------|-------------------------|-----------------|-----------------|-----------------|-----------------|
| | Value (End of Month) | Monthly Change (%) | Annual Change (%) | Monthly Max. | Date of Max. | Monthly Min. | Date of Min. |
| PX | 991.40 | 1.16 | 3.53 | 1 002.95 | 19.9.2014 | 977.49 | 24.9.2014 |
| PX-TR | 1 441.01 | 1.17 | 8.14 | 1 457.79 | 19.9.2014 | 1 420.78 | 24.9.2014 |
| PX-GLOB | 1 249.27 | 1.39 | 4.36 | 1 260.76 | 19.9.2014 | 1 228.84 | 24.9.2014 |

Objem akciových obchodů a index PX Equity Turnover and PX Index



Vývoj indexů PX a PX-GLOB (12 měsíců) Exchange Indices in the Last 12 Months

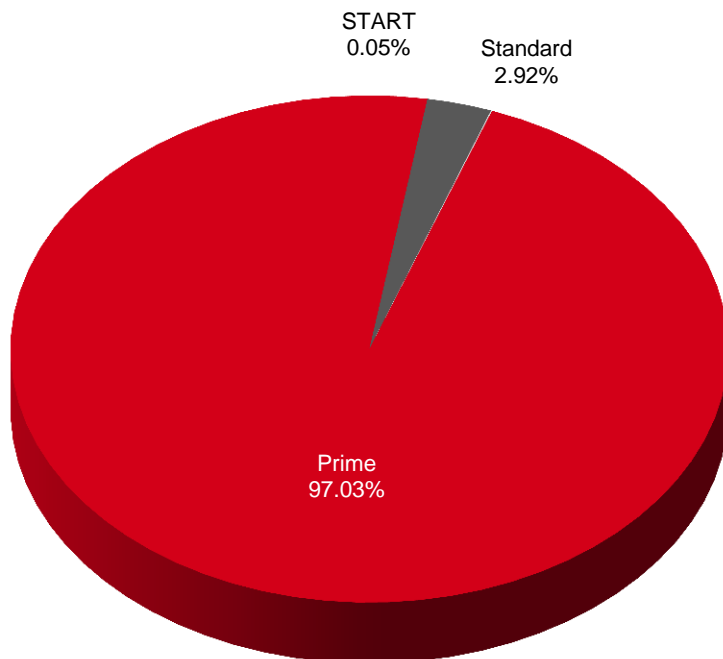


Přehled objemů obchodů - akcie
Trade Turnover - Equities

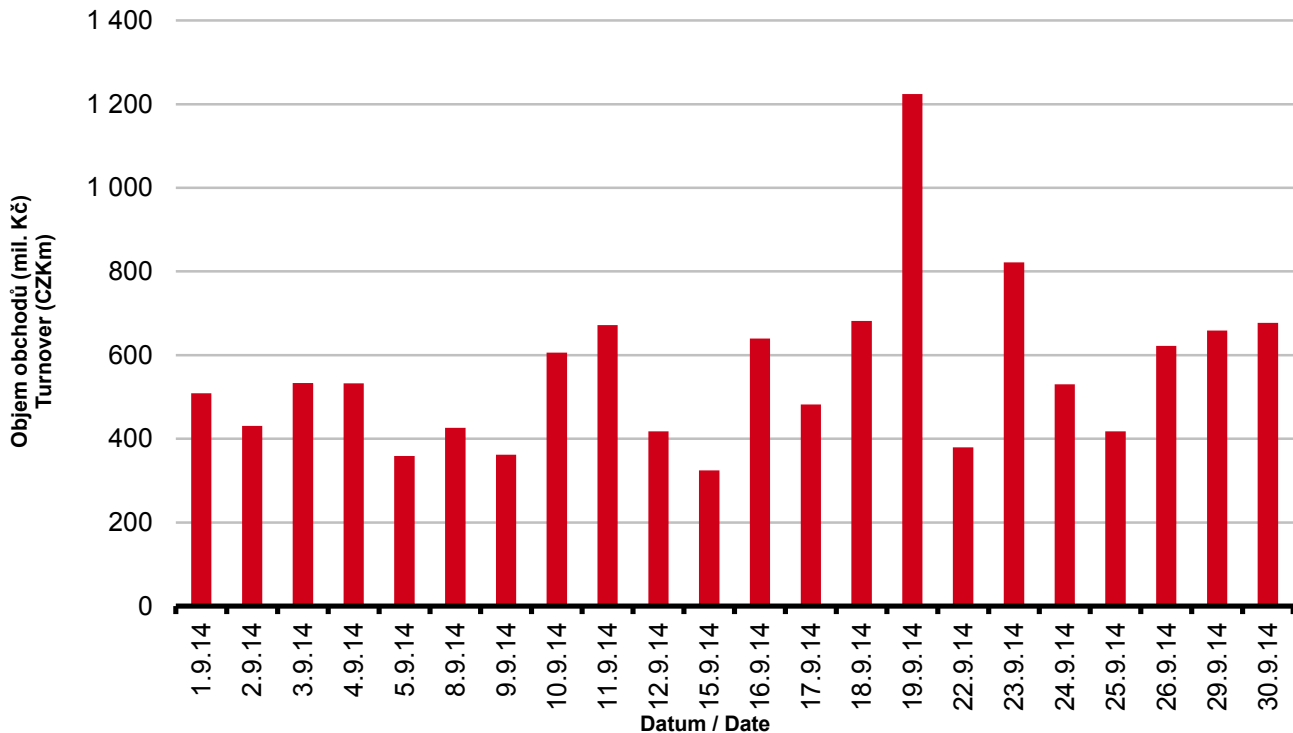
| Trh | Počet zobch. emisí | Objem (tis. Kč) | Počet (ks) | Počet transakcí |
|-----------------------|-------------------------|-----------------------|-------------------|------------------------|
| Market | Number of Traded Issues | Turnover (CZK 000s) | Volume (pieces) | Number of Transactions |
| Prime | 15 | 11 944 213.115 | 57 747 022 | 51 609 |
| Standard | 8 | 359 169.368 | 116 115 | 2 412 |
| START | 1 | 6 223.430 | 60 511 | 147 |
| Celkem / Total | 24 | 12 309 605.913 | 57 923 648 | 54 168 |

Single count method

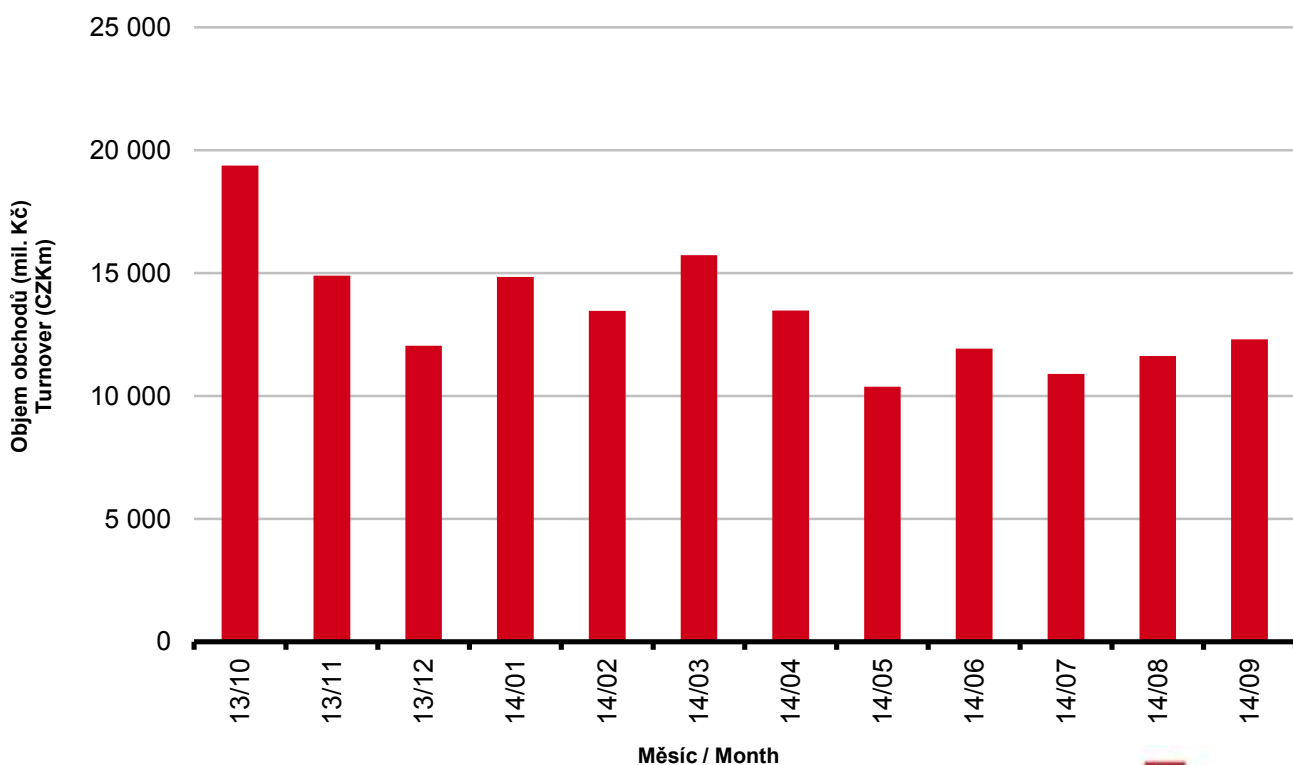
Skladba celkových objemů obchodů
Trade Turnover Structure



Denní objemy akciových obchodů
Daily Trade Turnover - Equities



Měsíční objemy akciových obchodů
Monthly Turnover - Equities



AKCIE / EQUITIES
Oborové objemy akciových obchodů a jejich podíl na celku
Turnover of Equities by Sector and as Percentage of the Total Turnover

| Číslo | Obor | Počet emisi | Objem (mil. Kč) | Podíl (%) |
|-------|--|------------------|-------------------|---------------|
| No. | Sector | Number of Issues | Turnover (CZKm) | (%) |
| 1 | Zemědělství / Agriculture | 0 | 0.000 | 0.00 |
| 2 | Výroba potravin / Food Production | 0 | 0.000 | 0.00 |
| 3 | Výroba nápojů a tabáku / Beverages & Tobacco | 3 | 380.997 | 3.10 |
| 4 | Těžba, zpracování nerostů a rud / Mining | 1 | 51.862 | 0.42 |
| 5 | Textilní, oděvní, kožedělný / Textiles | 1 | 40.787 | 0.33 |
| 6 | Dřevařský a papírenský / Wood and Paper | 0 | 0.000 | 0.00 |
| 7 | Chemický, farmaceut., guma / Chemicals, Pharmacy, Rubber | 2 | 33.591 | 0.27 |
| 8 | Stavebnictví, stav. hmoty / Building | 0 | 0.000 | 0.00 |
| 9 | Hutnictví, zpracování kovů / Metallurgy | 0 | 0.000 | 0.00 |
| 10 | Strojírenství / Mechanical Engineering | 0 | 0.000 | 0.00 |
| 11 | Elektrotechnika, elektronika / Electrical Engineering, Electronics | 0 | 0.000 | 0.00 |
| 12 | Energetika / Energy | 2 | 4 930.281 | 40.05 |
| 13 | Doprava a spoje / Transportation | 1 | 1 035.949 | 8.42 |
| 14 | Obchod / Trade | 1 | 0.052 | 0.00 |
| 15 | Peněžnictví / Finance and Banking | 3 | 5 657.281 | 45.96 |
| 16 | Služby / Services | 7 | 95.447 | 0.78 |
| 17 | Bižuterie, sklo a keramika / Jewelry, Glass, Ceramics | 0 | 0.000 | 0.00 |
| 18 | Investiční fondy / Investment Funds | 0 | 0.000 | 0.00 |
| 19 | Ostatní / Others | 3 | 83.358 | 0.68 |
| | CELKEM / TOTAL | 24 | 12 309.606 | 100.00 |

Emise akcií s největšími celkovými objemy obchodů
Highest Turnover of Equity Issues

| | ISIN | Název | Trh | Objem (mil. Kč) | Podíl (%) | Kumul. (%) |
|----|--------------|------------------|----------|-----------------|-----------|------------|
| | ISIN | Issuer | Market | Turnover (CZKm) | (%) | Cumul. (%) |
| 1 | CZ0005112300 | ČEZ | Prime | 4 930.281 | 40.05 | 40.05 |
| 2 | CZ0008019106 | KOMERČNÍ BANKA | Prime | 3 031.046 | 24.62 | 64.68 |
| 3 | AT0000652011 | ERSTE GROUP BANK | Prime | 2 526.287 | 20.52 | 85.20 |
| 4 | CZ0009093209 | O2 C.R. | Prime | 1 035.949 | 8.42 | 93.61 |
| 5 | CS0008418869 | PHILIP MORRIS ČR | Standard | 356.632 | 2.90 | 96.51 |
| 6 | AT0000908504 | VIG | Prime | 99.947 | 0.81 | 97.32 |
| 7 | NL0009604859 | FORTUNA | Prime | 85.398 | 0.69 | 98.02 |
| 8 | BMG200452024 | CETV | Prime | 80.931 | 0.66 | 98.67 |
| 9 | GB00B42CTW68 | NWR | Prime | 51.862 | 0.42 | 99.10 |
| 10 | LU0275164910 | PEGAS NONWOVENS | Prime | 40.787 | 0.33 | 99.43 |
| 11 | CZ0009091500 | UNIPETROL | Prime | 33.591 | 0.27 | 99.70 |
| 12 | CZ0005124420 | PLG | Prime | 18.142 | 0.15 | 99.85 |
| 13 | LU0122624777 | ORCO | Prime | 9.411 | 0.08 | 99.92 |
| 14 | GB00BF5SDZ96 | STOCK | START | 6.223 | 0.05 | 99.97 |
| 15 | CZ0005123620 | E4U | Standard | 2.427 | 0.02 | 99.99 |

Sumarizace Tržních kapitalizací (konec měsíce)
Market Capitalization Summary (Month-End)

| Trh Market | Tržní kapitalizace (mil. Kč) Market Capitalization (CZKm) | Počet emisí Number of Issues |
|-------------------------------------|--|---------------------------------|
| Prime | 1 047 975.0 | 14 |
| Standard | 30 212.5 | 8 |
| START | 20 800.0 | 1 |
| Celkem / Total | 1 098 987.6 | 23 |
| Z toho: / Of which: | | |
| Dom. emise / Domestic Issues | 706 245.2 | 13 |
| Zahr. emise / Foreign Issues | 392 742.3 | 10 |

Emise akcií s největšími tržními kapitalizacemi (konec měsíce)
Market Capitalization of Equity Issues (Month-End)

| | ISIN | Název Issuer | Trh Market | Tržní kapit. (mil. Kč) Market Capit. (CZKm) | Podíl (%) (%) | Kumul. (%) Cumul. (%) |
|----|--------------|------------------|---------------|--|------------------|--------------------------|
| 1 | CZ0005112300 | ČEZ | Prime | 356 149.2 | 32.41 | 32.41 |
| 2 | AT0000652011 | ERSTE GROUP BANK | Prime | 211 203.7 | 19.22 | 51.63 |
| 3 | CZ0008019106 | KOMERČNÍ BANKA | Prime | 196 853.0 | 17.91 | 69.54 |
| 4 | AT0000908504 | VIG | Prime | 126 208.0 | 11.48 | 81.02 |
| 5 | CZ0009093209 | O2 C.R. | Prime | 98 797.9 | 8.99 | 90.01 |
| 6 | CZ0009091500 | UNIPETROL | Prime | 22 304.2 | 2.03 | 92.04 |
| 7 | GB00BF5SDZ96 | STOCK | START | 20 800.0 | 1.89 | 93.93 |
| 8 | CS0008418869 | PHILIP MORRIS ČR | Standard | 19 519.7 | 1.78 | 95.71 |
| 9 | BE0003878957 | VGP | Prime | 7 433.2 | 0.68 | 96.39 |
| 10 | BMG200452024 | CETV | Prime | 6 755.6 | 0.61 | 97.00 |
| 11 | NL0009604859 | FORTUNA | Prime | 6 312.8 | 0.57 | 97.58 |
| 12 | LU0275164910 | PEGAS NONWOVENS | Prime | 6 072.9 | 0.55 | 98.13 |
| 13 | SK1120010287 | TMR | Prime | 4 023.6 | 0.37 | 98.49 |
| 14 | CZ0008467818 | ENERGOCHEMICA | Standard | 3 810.0 | 0.35 | 98.84 |
| 15 | GB00B42CTW68 | NWR | Prime | 3 032.4 | 0.28 | 99.12 |
| 16 | CZ0009055158 | PRAŽSKÉ SLUŽBY | Standard | 2 228.4 | 0.20 | 99.32 |
| 17 | CZ0005124420 | PLG | Prime | 1 928.4 | 0.18 | 99.49 |
| 18 | CS0008419750 | ENERGOAQUA | Standard | 1 678.2 | 0.15 | 99.65 |
| 19 | CS0008416251 | RMS MEZZANINE | Standard | 1 224.8 | 0.11 | 99.76 |
| 20 | CZ0005088559 | TOMA | Standard | 1 215.8 | 0.11 | 99.87 |

Indikátory domácích emisí z trhu Prime (konec měsíce)
Indicators of Domestic Equities from the Prime Market (Month-End)

| Indikátor Indicator | P/E P/E | P/BV P/BV | Dividendový výnos (%) Dividend Yields (%) |
|------------------------|------------|--------------|--|
| Hodnota Value | 13,11 | 1,63 | 1,32 |

AKCIE / EQUITIES
Emise akcií s největším růstem kurzů (objem nad 50 000 Kč)
Issues of Equities with the Highest Price Increase (Turnover above CZK 50,000)

| | ISIN | Název | Trh | Kurz 29.8.14 | Kurz 30.9.14 | Změna (%) | Objem obch. (tis. Kč) |
|----|--------------|-----------------|--------|------------------|------------------|---------------|--------------------------|
| | ISIN | Issuer | Market | Price 29.8.14 | Price 30.9.14 | Change (%) | Turnover (CZK 000s) |
| 1 | SK1120010287 | TMR | Prime | 530.00 | 599.90 | 13.2 | 579.5 |
| 2 | CZ0005112300 | ČEZ | Prime | 612.50 | 662.00 | 8.1 | 4 930 281.3 |
| 3 | CZ0008019106 | KOMERČNÍ BANKA | Prime | 4 900.00 | 5 179.00 | 5.7 | 3 031 045.9 |
| 4 | CZ0009093209 | O2 C.R. | Prime | 296.00 | 313.00 | 5.7 | 1 035 949.2 |
| 5 | LU0275164910 | PEGAS NONWOVENS | Prime | 630.00 | 658.00 | 4.4 | 40 787.4 |
| 6 | | | | | | | |
| 7 | | | | | | | |
| 8 | | | | | | | |
| 9 | | | | | | | |
| 10 | | | | | | | |
| 11 | | | | | | | |
| 12 | | | | | | | |
| 13 | | | | | | | |
| 14 | | | | | | | |
| 15 | | | | | | | |
| 16 | | | | | | | |
| 17 | | | | | | | |
| 18 | | | | | | | |
| 19 | | | | | | | |
| 20 | | | | | | | |

Emise akcií s největším poklesem kurzů (objem nad 50 000 Kč)
Issues of Equities with the Highest Price Decrease (Turnover above CZK 50,000)

| | ISIN | Název | Trh | Kurz 29.8.14 | Kurz 30.9.14 | Změna (%) | Objem obch. (tis. Kč) |
|----|--------------|------------------|----------|------------------|------------------|---------------|--------------------------|
| | ISIN | Issuer | Market | Price 29.8.14 | Price 30.9.14 | Change (%) | Turnover (CZK 000s) |
| 1 | GB00B42CTW68 | NWR | Prime | 3.10 | 0.75 | -75.8 | 51 862.0 |
| 2 | AT0000652011 | ERSTE GROUP BANK | Prime | 533.10 | 491.40 | -7.8 | 2 526 287.2 |
| 3 | CZ0005124420 | PLG | Prime | 174.00 | 165.00 | -5.2 | 18 141.9 |
| 4 | NL0009604859 | FORTUNA | Prime | 127.85 | 121.40 | -5.0 | 85 397.9 |
| 5 | BMG200452024 | CETV | Prime | 52.00 | 50.00 | -3.8 | 80 931.3 |
| 6 | CZ0009091500 | UNIPETROL | Prime | 126.05 | 123.00 | -2.4 | 33 590.7 |
| 7 | CZ0005123620 | E4U | Standard | 76.80 | 75.00 | -2.3 | 2 427.0 |
| 8 | CS0008418869 | PHILIP MORRIS ČR | Standard | 10 411.00 | 10 200.00 | -2.0 | 356 632.1 |
| 9 | AT0000908504 | VIG | Prime | 1 005.00 | 986.00 | -1.9 | 99 947.5 |
| 10 | | | | | | | |
| 11 | | | | | | | |
| 12 | | | | | | | |
| 13 | | | | | | | |
| 14 | | | | | | | |
| 15 | | | | | | | |
| 16 | | | | | | | |
| 17 | | | | | | | |
| 18 | | | | | | | |
| 19 | | | | | | | |
| 20 | | | | | | | |

DLUHOPISY / BONDS
Přehled objemů obchodů - dluhopisy
Turnover Sumary - Bonds

| Sektor | Počet emisí | Objem (tis. Kč) | Počet (ks) | Počet transakcí |
|------------------------------|------------------|---------------------|-----------------|--------------------|
| Sector | Number of Issues | Turnover (CZK 000s) | Volume (pieces) | No of Transactions |
| Veřejný / Public | 24 | 0.000 | 0 | 0 |
| Podnikový / Corporate | 34 | 1 614 607.149 | 90 630 378 | 265 |
| Finanční / Financial | 57 | 0.000 | 0 | 0 |
| Celkem / Total | 115 | 1 614 607.149 | 90 630 378 | 265 |

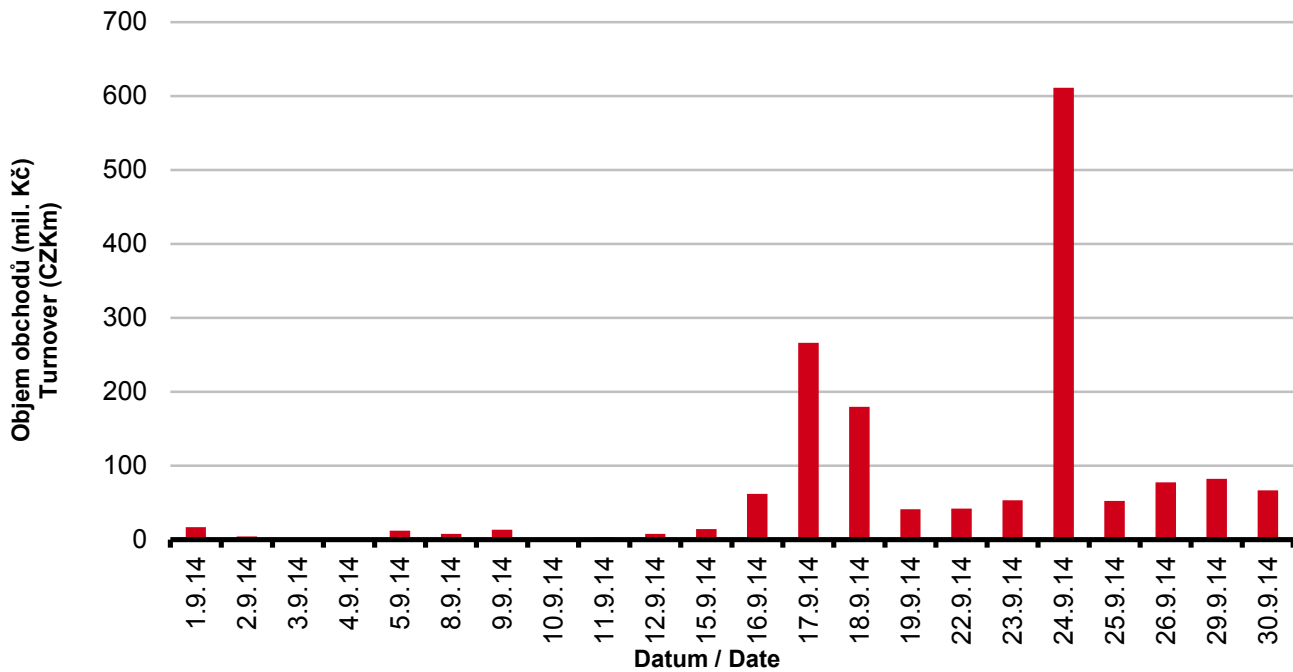
Single count method

Emise dluhopisů s největšími celkovými objemy obchodů
Bond Issues with the Highest Turnover

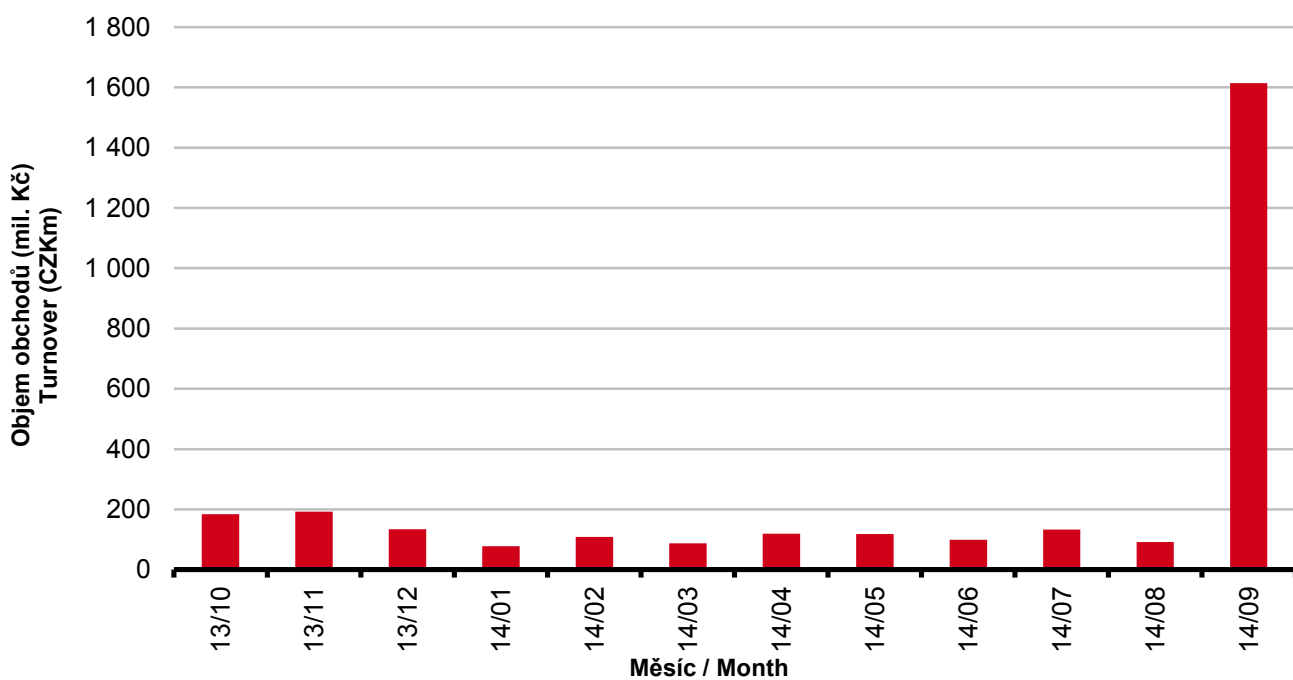
| | ISIN | Název | Sektor | Objem (mil. Kč) | Podíl (%) | Kumul. (%) |
|----|--------------|--------------------|-----------|-----------------|-----------|------------|
| | ISIN | Issue | Sector | Turnover (CZKm) | (%) | Cumul. (%) |
| 1 | CZ0000000492 | JTFG IV 5,20/17 | Corporate | 814.343 | 50.44 | 50.44 |
| 2 | CZ0000000252 | JTFG I 6,40/14 | Corporate | 632.315 | 39.16 | 89.60 |
| 3 | CZ0003502312 | BIGBOARD 7,00/17 | Corporate | 63.759 | 3.95 | 93.55 |
| 4 | CZ0003510646 | CPI 6,05/16 | Corporate | 59.045 | 3.66 | 97.20 |
| 5 | CZ0003501868 | CPI VAR/19 | Corporate | 31.644 | 1.96 | 99.16 |
| 6 | CZ0003704249 | J&T BANKA 10% PERP | Corporate | 13.492 | 0.84 | 100.00 |
| 7 | CZ0003501660 | ZONER SOF.10,00/19 | Corporate | 0.010 | 0.00 | 100.00 |
| 8 | | | | | | |
| 9 | | | | | | |
| 10 | | | | | | |
| 11 | | | | | | |
| 12 | | | | | | |
| 13 | | | | | | |
| 14 | | | | | | |
| 15 | | | | | | |
| 16 | | | | | | |
| 17 | | | | | | |
| 18 | | | | | | |
| 19 | | | | | | |
| 20 | | | | | | |

DLUHOPISY / BONDS

Denní objemy obchodů s dluhopisy
Daily Turnover of Bonds



Měsíční objemy dluhopisových obchodů
Monthly Turnover - Bonds



OSTATNÍ PRODUKTY / OTHER PRODUCTS

Certifikáty Certificates

| Druh certifikátu | Počet emisí | Zobchod. kusy | Objem (CZK) | Počet obchodů |
|---------------------|------------------|---------------|----------------|------------------|
| Type of Certificate | Number of Issues | Traded Volume | Turnover (CZK) | Number of Trades |
| Basket | 2 | 1 638 | 1 434 640.30 | 8 |
| Bonus | 13 | 25 341 | 30 257 172.00 | 75 |
| Index | 14 | 90 | 222 418.35 | 4 |
| Turbo | 27 | 25 431 | 30 479 590.35 | 79 |

Upisovací práva Subscription Rights

| Počet emisí | Zobchod. kusy | Objem (CZK) | Počet obchodů |
|------------------|---------------|----------------|------------------|
| Number of Issues | Traded Volume | Turnover (CZK) | Number of Trades |
| 0 | 54 281 945 | 3 697 384.45 | 724 |

Održené kupóny Separated Coupons

| Počet emisí | Zobchod. kusy | Objem (CZK) | Počet obchodů |
|------------------|---------------|----------------|------------------|
| Number of Issues | Traded Volume | Turnover (CZK) | Number of Trades |
| 19 | 0 | 0.00 | 0 |

Roční objemy obchodů (v mil.) / Yearly Turnover (in mil.)

| Rok Year | Akcie + PL / Equities + Units | | | Dluhové cenné papíry / Bonds | | |
|-------------|-------------------------------|-------------------|----------|------------------------------|-------------------|----------|
| | CZK | EUR ¹⁾ | USD | CZK | EUR ¹⁾ | USD |
| 1993 | 7 129.5 | 212.7 | 241.6 | 1 890.5 | 56.2 | 64.5 |
| 1994 | 42 593.9 | 1 252.7 | 1 475.3 | 19 432.3 | 568.0 | 684.5 |
| 1995 | 125 642.8 | 3 671.3 | 4 753.5 | 69 764.1 | 2 035.3 | 2 633.3 |
| 1996 | 249 935.2 | 7 348.9 | 9 188.8 | 143 264.3 | 4 216.4 | 5 288.8 |
| 1997 | 246 301.9 | 6 961.2 | 7 897.1 | 433 235.6 | 12 053.0 | 13 644.5 |
| 1998 | 172 594.0 | 4 789.6 | 5 385.7 | 687 597.6 | 19 189.0 | 21 761.9 |
| 1999 | 163 456.7 | 4 425.9 | 4 705.3 | 1 024 029.0 | 27 801.4 | 29 691.6 |
| 2000 | 264 145.3 | 7 390.0 | 6 971.1 | 958 687.6 | 26 866.9 | 25 153.4 |
| 2001 | 128 799.1 | 3 780.7 | 3 393.5 | 1 858 379.7 | 54 615.9 | 49 041.9 |
| 2002 | 197 397.6 | 6 413.8 | 6 036.9 | 1 595 673.6 | 51 870.6 | 49 106.8 |
| 2003 | 257 442.5 | 8 068.6 | 9 187.4 | 1 110 103.9 | 34 909.5 | 39 246.8 |
| 2004 | 479 661.6 | 15 038.3 | 18 744.3 | 692 479.8 | 21 621.9 | 26 814.5 |
| 2005 | 1 041 172.9 | 34 957.6 | 43 642.8 | 533 241.0 | 17 912.3 | 22 382.7 |
| 2006 | 848 895.6 | 29 946.5 | 37 585.6 | 598 920.6 | 21 104.8 | 26 382.2 |
| 2007 | 1 013 018.8 | 36 528.2 | 50 115.8 | 508 858.2 | 18 387.8 | 25 231.5 |
| 2008 | 852 042.5 | 34 223.0 | 50 408.3 | 643 151.3 | 25 693.0 | 37 456.9 |
| 2009 | 463 858.9 | 17 572.3 | 24 510.5 | 585 711.5 | 22 087.4 | 30 762.4 |
| 2010 | 389 867.2 | 15 391.1 | 20 447.7 | 529 907.6 | 20 938.9 | 27 677.8 |
| 2011 | 370 986.4 | 15 130.3 | 21 104.5 | 628 022.4 | 25 423.6 | 35 184.1 |
| 2012 | 250 581.7 | 9 967.7 | 12 828.5 | 594 213.0 | 23 598.5 | 30 194.6 |
| 2013 | 174 740.5 | 6 735.2 | 8 949.4 | 1 925.7 | 74.2 | 98.5 |

¹⁾ V období 1993 - 1998 objem obchodů v XEU / ¹⁾ In period 1993 - 1998 - trade value in XEU

Měsíční objemy obchodů v roce 2014 (v mil.) / Monthly Turnover in 2014 (in mil.)

| Měsíc Month | Akcie / Equities | | | Dluhové cenné papíry / Bonds | | |
|----------------|------------------|---------|---------|------------------------------|------|-------|
| | CZK | EUR | USD | CZK | EUR | USD |
| 01 | 14 838.3 | 539.9 | 734.8 | 78.4 | 2.8 | 3.9 |
| 02 | 13 459.6 | 490.7 | 671.1 | 108.9 | 4.0 | 5.4 |
| 03 | 15 726.9 | 574.0 | 793.2 | 87.0 | 3.2 | 4.4 |
| 04 | 13 478.6 | 491.1 | 678.1 | 119.1 | 4.3 | 6.0 |
| 05 | 10 379.2 | 378.2 | 518.7 | 118.4 | 4.3 | 5.9 |
| 06 | 11 930.1 | 434.6 | 590.8 | 99.3 | 3.6 | 4.9 |
| 07 | 10 903.4 | 397.2 | 538.2 | 133.5 | 4.9 | 6.6 |
| 08 | 11 621.6 | 417.8 | 556.3 | 91.7 | 3.3 | 4.4 |
| 09 | 12 309.6 | 446.2 | 575.1 | 1 614.6 | 58.7 | 75.3 |
| 10 | | | | | | |
| 11 | | | | | | |
| 12 | | | | | | |
| 2014 | 114 647.3 | 4 169.7 | 5 656.3 | 2 450.9 | 89.1 | 116.8 |

Tržní kapitalizace akcií na konci roku (v mil.) / Market Capitalization at the End of the Year - Equities (in mil.)

| Rok Year | Domácí akcie / Domestic equities | | | Zahraniční akcie / Foreign equities | | | Celkem / Total | | |
|-------------|----------------------------------|-------------------|----------|-------------------------------------|-------------------|----------|----------------|-------------------|-----------|
| | CZK | EUR ¹⁾ | USD | CZK | EUR ¹⁾ | USD | CZK | EUR ¹⁾ | USD |
| 1994 | 353 102.9 | 10 333.7 | 12 588.8 | 0.0 | 0.0 | 0.0 | 353 102.9 | 10 333.7 | 12 588.8 |
| 1995 | 478 634.1 | 14 053.5 | 17 992.4 | 0.0 | 0.0 | 0.0 | 478 634.1 | 14 053.5 | 17 992.4 |
| 1996 | 539 242.2 | 15 903.1 | 19 729.3 | 0.0 | 0.0 | 0.0 | 539 242.2 | 15 903.1 | 19 729.3 |
| 1997 | 495 680.5 | 12 968.5 | 14 311.1 | 0.0 | 0.0 | 0.0 | 495 680.5 | 12 968.5 | 14 311.1 |
| 1998 | 416 202.1 | 11 884.4 | 13 940.8 | 0.0 | 0.0 | 0.0 | 416 202.1 | 11 884.4 | 13 940.8 |
| 1999 | 479 649.6 | 13 275.7 | 13 331.4 | 0.0 | 0.0 | 0.0 | 479 649.6 | 13 275.7 | 13 331.4 |
| 2000 | 442 893.8 | 12 621.7 | 11 712.7 | 0.0 | 0.0 | 0.0 | 442 893.8 | 12 621.7 | 11 712.7 |
| 2001 | 340 250.7 | 10 639.5 | 9 383.9 | 0.0 | 0.0 | 0.0 | 340 250.7 | 10 639.5 | 9 383.9 |
| 2002 | 357 909.5 | 11 326.3 | 11 874.5 | 120 128.8 | 3 801.5 | 3 985.6 | 478 038.3 | 15 127.8 | 15 860.1 |
| 2003 | 453 521.2 | 13 995.4 | 17 678.4 | 190 961.8 | 5 893.0 | 7 443.7 | 644 483.0 | 19 888.4 | 25 122.1 |
| 2004 | 660 289.3 | 21 720.0 | 29 551.1 | 315 484.7 | 10 377.8 | 14 119.4 | 975 774.0 | 32 097.8 | 43 670.5 |
| 2005 | 900 880.6 | 31 059.5 | 36 639.0 | 429 932.6 | 14 822.7 | 17 485.5 | 1 330 813.2 | 45 882.2 | 54 124.5 |
| 2006 | 953 895.5 | 34 693.4 | 45 693.4 | 638 101.0 | 23 207.9 | 30 566.2 | 1 591 996.5 | 57 901.3 | 76 259.7 |
| 2007 | 1 275 506.2 | 47 987.4 | 70 485.5 | 566 176.3 | 21 300.8 | 31 287.4 | 1 841 682.5 | 69 288.3 | 101 772.9 |
| 2008 | 788 650.6 | 29 615.1 | 41 758.5 | 303 081.3 | 11 381.2 | 16 047.9 | 1 091 731.9 | 40 996.3 | 57 806.4 |
| 2009 | 825 405.4 | 31 265.4 | 44 832.2 | 468 077.0 | 17 730.2 | 25 423.8 | 1 293 482.4 | 48 995.5 | 70 256.0 |
| 2010 | 805 237.0 | 31 922.2 | 42 394.3 | 582 767.5 | 23 102.8 | 30 681.7 | 1 388 004.5 | 55 025.0 | 73 075.9 |
| 2011 | 753 443.1 | 29 203.2 | 37 785.5 | 307 324.6 | 11 911.8 | 15 412.5 | 1 060 767.7 | 41 115.0 | 53 198.0 |
| 2012 | 708 777.7 | 28 193.2 | 37 163.3 | 433 312.2 | 17 236.0 | 22 719.8 | 1 142 089.9 | 45 429.2 | 59 883.1 |
| 2013 | 603 537.0 | 21 990.8 | 30 314.8 | 489 946.8 | 17 852.0 | 24 609.3 | 1 093 483.9 | 39 842.7 | 54 924.1 |

¹⁾ V období 1993 - 1998 tržní kapitalizace v XEU / ¹⁾ In period 1993 - 1998 - market capitalization in XEU

Tržní kapitalizace akciového trhu v roce 2014 (v mil.) / Equities Market Capitalization in 2014 (in mil.)

| Měsíc - konec Month - end | Domácí akcie / Domestic equities | | | Zahraniční akcie / Foreign equities | | | Celkem / Total | | |
|------------------------------|----------------------------------|----------|----------|-------------------------------------|----------|----------|----------------|----------|----------|
| | CZK | EUR | USD | CZK | EUR | USD | CZK | EUR | USD |
| 01 | 596 875.1 | 21 704.5 | 29 336.2 | 501 786.7 | 18 246.8 | 24 662.7 | 1 098 661.8 | 39 951.3 | 53 998.9 |
| 02 | 620 966.5 | 22 712.7 | 31 376.2 | 495 310.7 | 18 116.7 | 25 027.1 | 1 116 277.2 | 40 829.5 | 56 403.3 |
| 03 | 639 806.8 | 23 316.6 | 32 149.5 | 474 467.6 | 17 291.1 | 23 841.4 | 1 114 274.4 | 40 607.7 | 55 990.9 |
| 04 | 642 080.3 | 23 386.6 | 32 382.5 | 476 917.5 | 17 370.9 | 24 052.7 | 1 118 997.8 | 40 757.5 | 56 435.2 |
| 05 | 643 042.3 | 23 408.9 | 31 855.9 | 494 737.3 | 18 010.1 | 24 508.9 | 1 137 779.6 | 41 419.0 | 56 364.8 |
| 06 | 645 831.2 | 23 527.5 | 32 130.9 | 471 164.0 | 17 164.4 | 23 441.0 | 1 116 995.1 | 40 692.0 | 55 571.9 |
| 07 | 628 131.0 | 22 783.1 | 30 481.4 | 421 988.0 | 15 306.1 | 20 477.9 | 1 050 119.0 | 38 089.2 | 50 959.3 |
| 08 | 664 647.5 | 23 972.9 | 31 616.8 | 412 189.3 | 14 867.1 | 19 607.5 | 1 076 836.8 | 38 839.9 | 51 224.3 |
| 09 | 706 245.2 | 25 681.6 | 32 318.0 | 392 742.3 | 14 281.5 | 17 972.0 | 1 098 987.6 | 39 963.2 | 50 290.0 |
| 10 | | | | | | | | | |
| 11 | | | | | | | | | |
| 12 | | | | | | | | | |